

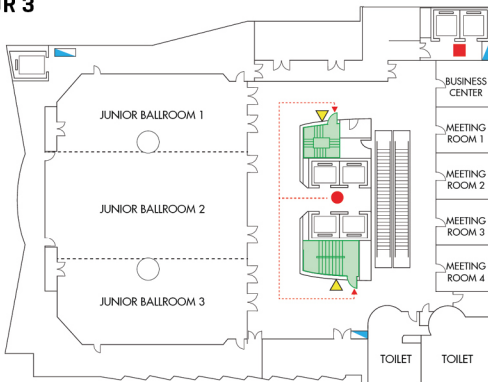


PULLMAN BANGKOK
GRANDE SUKHUMVIT
[THA & TICA Member]

Add. 30 Soi Sukhumvit 21, Asoke Rd. Bangkok 10110 Thailand
Tel: [66] 2204 4000 Fax: [66] 2204 4199
Website: www.pullmanbangkokgrandesukhumvit.com

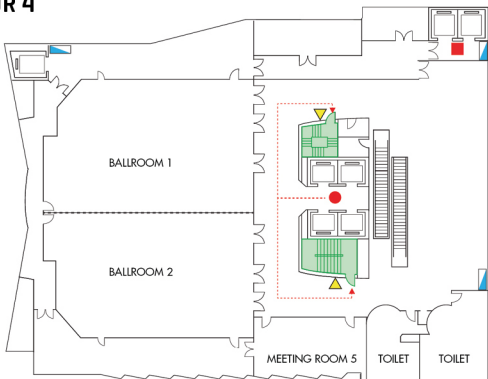


FLOOR 3



ROOM	LOCATED	AREA (Sq.m.)	DIMENSIONS (M.) (W x L x H)	BOARD ROOM	U SHAPE	CLASSROOM	THEATRE	COCKTAIL	BANQUET	CABARET
JUNIOR BALLROOM	3rd Floor	496.68	26.1 x 19.25 x 3.4	60	65	216	350	350	300	168
JUNIOR 1		134.69	7.6 x 18.1 x 3.4	56	35	48	100	80	80	56
JUNIOR 2		153.78	8.3 x 19.25 x 3.4	60	45	96	150	120	120	80
JUNIOR 3		169.98	9.55 x 18.1 x 3.4	48	41	72	130	100	100	64
JUNIOR 1-2		288.47	15.9 x 19.25 x 3.4	60	57	144	250	200	200	128
JUNIOR 2-3		323.76	17.85 x 19.25 x 3.4	60	57	168	280	200	220	128
MEETING 1										
MEETING 2		15.33	4.2 x 3.65 x 2.7	6	-	-	-	-	-	-
MEETING 3										
MEETING 4										
GRAND BALLROOM	4th Floor	485.04	24.85 x 19.75 x 6	66	90	264	580	500	420	280
BALLROOM 1		248.94	12.75 x 19.75 x 6	48	54	105	210	200	150	120
BALLROOM 2		234.13	12 x 19.75 x 6							
MEETING ROOM 5		49.88	5.25 x 9.5 x 3.6	18	22	24	40	25	40	16
MEETING ROOM	5th Floor	117.02	17.4 x 7.6 x 3.45	48	48	48	110	80	70	64
MEETING ROOM 6		51.59	7.7 x 6.7 x 3.45	18	21	18	40	40	30	24
MEETING ROOM 7										
MEETING ROOM 8		58.51	8.7 x 7.6 x 3.45	18	21	27	40	40	30	24
MEETING ROOM 9										
MEETING ROOM 10		31.92	4.2 x 7.6 x 3.6	-	-	-	-	-	-	-

FLOOR 4



ROOM	LOCATED	AREA (Sq.m.)	DIMENSIONS (M.) (W x L x H)	BUFFET	HOLLOW/OVAL	I SHAPE	FISH BONE	CB/EXIST	LOUNGE	DOUBLE U SHAPE	EXHIBITION
JUNIOR BALLROOM	3rd Floor	496.68	26.1 x 19.25 x 3.4	270	66	48	189	350	300	114	250
JUNIOR 1		134.69	7.6 x 18.1 x 3.4	60	60	48	48	80	60	-	50
JUNIOR 2		153.78	8.3 x 19.25 x 3.4	100	66	48	96	120	100	114	100
JUNIOR 3		169.98	9.55 x 18.1 x 3.4	80	60	48	72	100	80	99	80
JUNIOR 1-2		288.47	15.9 x 19.25 x 3.4	170	66	48	126	200	180	114	180
JUNIOR 2-3		323.76	17.85 x 19.25 x 3.4	180	66	48	147	200	180	114	180
MEETING 1											
MEETING 2		15.33	4.2 x 3.65 x 2.7	-	-	-	-	-	-	-	-
MEETING 3											
MEETING 4											
GRAND BALLROOM	4th Floor	485.04	24.85 x 19.75 x 6	350	114	66	252	500	300	162	300
BALLROOM 1		248.94	12.75 x 19.75 x 6	150	60	48	105	200	120	96	150
BALLROOM 2		234.13	12 x 19.75 x 6								
MEETING ROOM 5		49.88	5.25 x 9.5 x 3.6	30	25	18	24	25	10	-	-
MEETING ROOM	5th Floor	117.02	17.4 x 7.6 x 3.45	70	54	48	48	110	50	-	60
MEETING ROOM 6		51.59	7.7 x 6.7 x 3.45	30	24	18	18	30	15	-	-
MEETING ROOM 7											
MEETING ROOM 8		58.51	8.7 x 7.6 x 3.45	30	24	18	27	30	30	-	30
MEETING ROOM 9											
MEETING ROOM 10		31.92	4.2 x 7.6 x 3.6	-	-	12	-	-	-	-	-

FLOOR 5

